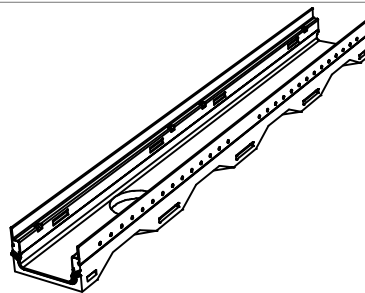
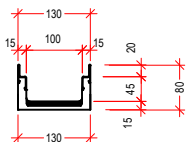
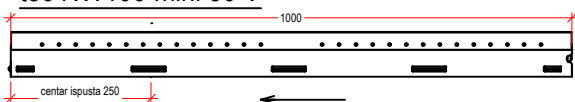


## FCT tec mini NW 100

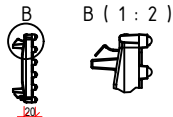
### 1. Kanal:

tec NW100 mini 80 V



### 2. Liveno gvozdna rešetka/mrežasta:

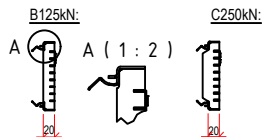
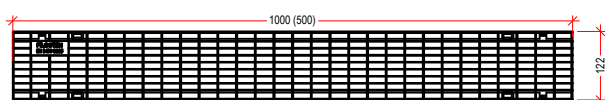
C250kN MW29/13: GJS 17010101



C250kN MW29/6: GJS 17010106

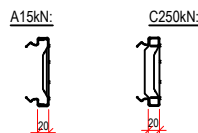
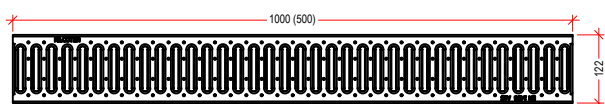


B125kN MW30/10: V 17010220 (17010221) / C250kN MW30/10: V 17010222 (17010223)



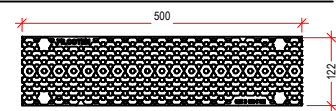
### 2. Rešetka sa prorezima:

A15kN SW8/80: V 17010202 (17010203) / C250kN SW8/80: 17010206 (17010207)



### 2. Plastična rešetka "ComBee":

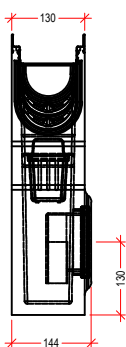
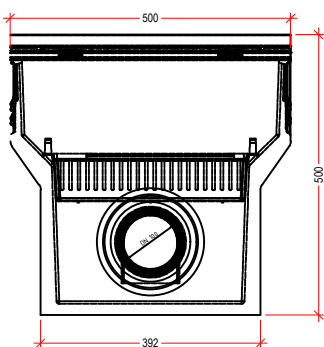
C250kN, Ø7,3: PA17010402



### 3. Sabirno okno:

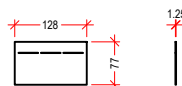
(opcionalno: kofica za sabirno okno 22515

V 10410291



### 4. Čeoni poklopac/Čeoni poklopac sa izlivom:

V 19010200



Kanal - dimenzije				
Tip	Visina A	Visina B	Dužina	BG code V
mini 80	80	80	1000	10210201

Legenda:	
V:	pocinkovani čelik (ivica)
E:	nerđajući čelik
GJS:	liveno gvožđe
H:	drvo

**purator**  
serbia  
member of the wallner & neubert group

PURATOR Ekotehnika d.o.o.  
ul. Kružni put 16a  
Beograd, Leštane  
office@purator.rs  
tel.: +381 11 803 10 52  
faks: +381 11 803 08 26  
www.purator.rs



www.bg-company.com

Naziv crteža:  
Drawing name:

**LINIJSKO ODVODNJAVANJE-FCT tec mini NW100**

Art.br:

10210201

format:

A4

scale: